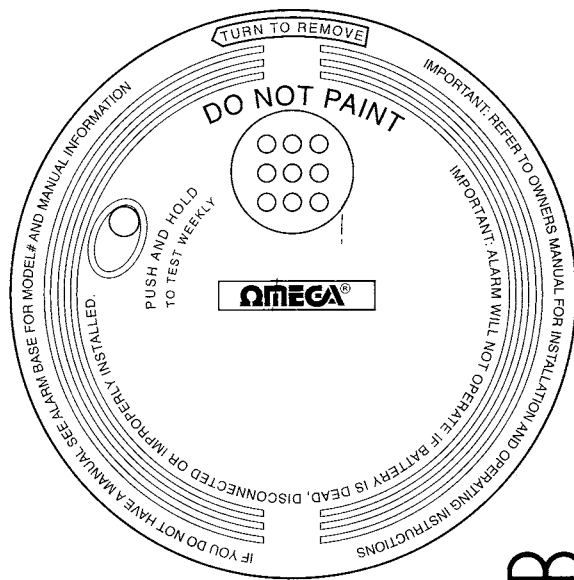




17007

IONIZATION SMOKE ALARM

USER MANUAL



BS 5446-1:2000
KM 53822

MODEL : 17007

YOUR OMEGA 17007 WILL NOT OPERATE WITHOUT A BATTERY INSTALLED. A PROPER 9V BATTERY (IS SUPPLIED) AND MUST BE INSTALLED IMMEDIATELY.

WHEN A LOW BATTERY SIGNAL IS GIVEN YOU MUST REPLACE THE 9V BATTERY OR THE UNIT WILL FAIL. WE RECOMMEND FOR YOU TO TEST THE UNIT WEEKLY.

PLEASE READ THESE INSTRUCTIONS PRIOR TO INSTALLING YOUR OMEGA 17007 AND WE RECOMMEND FOR YOU TO RETAIN THEM FOR YOUR FUTURE REFERENCE AS THEY CONTAIN IMPORTANT SAFETY INFORMATION.

INTRODUCTION

Congratulations! You are now in possession of a unique safety product bought to you from Omega. Your "Ionization Smoke Alarm", provides you with a safety device for alerting you to smoke or fires in your household or office.

For your own safety, please read the following instructions carefully before attempting to install your Omega 17007.

POSITIONING YOUR OMEGA 17007

Your Omega 17007 is a single isolated Smoke Alarm and should not be connected to other smoke alarms or similar devices.

Primarily as smoke, heat and other combustion rises and spread horizontally, it is advisable to position your Omega 17007 "Ionization Smoke Alarm" in the middle of a ceiling centrally located in that particular room.

Avoid areas where there is no air circulation. Eg. Corners of the room.

Keep away from items which may prevent the free flow of air.

Ideally the positioning should be at least 15cm (6 Inches) from a side wall and 61cm (24 Inches) from any corner. (See Diagram below)

If you have to install your "Omega 17007" on a wall, do not mount it in tight corners, and use an inside wall with it a maximum 15cm (6 Inches) below the ceiling and at least 61cm (24 Inches) from any corner. For attics (be sure they are not dusty / dirty or they will affect the alarm) with a roof ridge, be sure they are installed 90cm (35") from the centre.

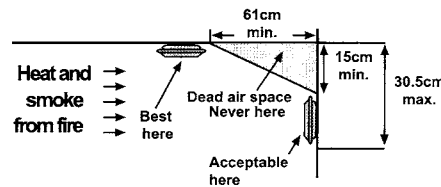


Diagram A, CEILING

We recommend for maximum protection, the installation of an "Omega 17007" smoke alarm in every room. Or at least one smoke alarm should be installed outside of all sleeping areas/ bedrooms to protect the exit path from the bedroom, as bedroom's are usually farthest from an exit. In a house with more than one floor there should be at least one smoke alarm on each floor. If bedrooms in the home are situated in different parts of the dwelling, several smoke alarms should be fitted.

Always check that the audible alarm can easily be heard from the bedroom or install (as mentioned above) in the bedroom itself.

DO NOT INSTALL "SMOKE ALARMS" IN THE KITCHEN, BATHROOM OR GARAGE.

- Kitchen – Smoke or cooking fumes will trigger an alarm.
- Bathroom - Steam and humidity can affect the alarm.
- Garage – Exhaust fumes are likely to set "off" the alarm.

Also avoid installation:

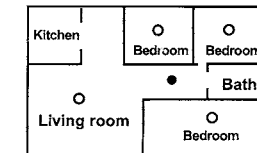
- In dusty / dirty environments where natural combustion particles are found.
- In badly ventilated areas
- Too near lighting fixtures. No closer than 150cm (60") from fluorescent light fixtures.
- Near open fireplaces
- Near fans or wall vents.
- Adjacent with or above hot components such as radiators or other forms of heaters or rooms with high humidity.
- In areas where temperatures may be below 0°C, above 40°C or with relative humidity above 70%.

YOUR OMEGA 17007 MUST NOT BE PAINTED

If you live on a single floor, you should fit an Omega 17007, to protect the hallway between the living area and sleeping area. Ensure installation is as close to the living area as possible and make sure the alarm is able to be heard when all bedrooms are occupied.

(See Single Floor Minimum Requirements below)

Typical SINGLE floor installation



- Smoke alarm for Minimum Protection
- Recommended Smoke alarm for Additional Protection

INSTALLATION :

Your Omega 17007 is designed for easy mounting on a wall or ceiling. A complete mounting kit is included with your Omega 17007. First attach the mounting bracket on the wall or ceiling with the screws provided. Second twist and lock the smoke alarm on the mounting bracket.

INITIAL TESTING

Now test the alarm by pressing the test button on the smoke alarm cover for at least two seconds until the unit emits a pulsating alarm and then release immediately. The alarm sounds if all electronic circuitry, alarm and battery are working. If no alarm sounds, the unit has a defective battery or other problem may exist.